

Key Features

- Decodes DTMF Dialing (levels, frequency, error, tone width, interdigit interval)
- Decodes Pulse Dialing (PPS, make/break, interdigit interval)
- Measures Flash Timing
- Programmable Ringing Generator (up to 3 rings cycle)
- Programmable Network Tones (dialing, busy, ring back, metering pulse, stutter, etc.)
- Programmable Telephone Interface (voltage, current, polarity, impedance)
- Measures DTMF Distortion
- Generates Type I Caller ID for Bellcore and ETSI standards
- Generates Type II Caller ID for Bellcore and ETSI standards
- Built-in Programmable DTMF generator
- Built-in arbitrary dual tone signal generator
- Measures tone levels and THD on telephone line
- Optional C-message weighting filter
- Event driven scripting language for simple production testing
- Supports up to 4 telephone lines per PC (requires 4 ISA Slots)

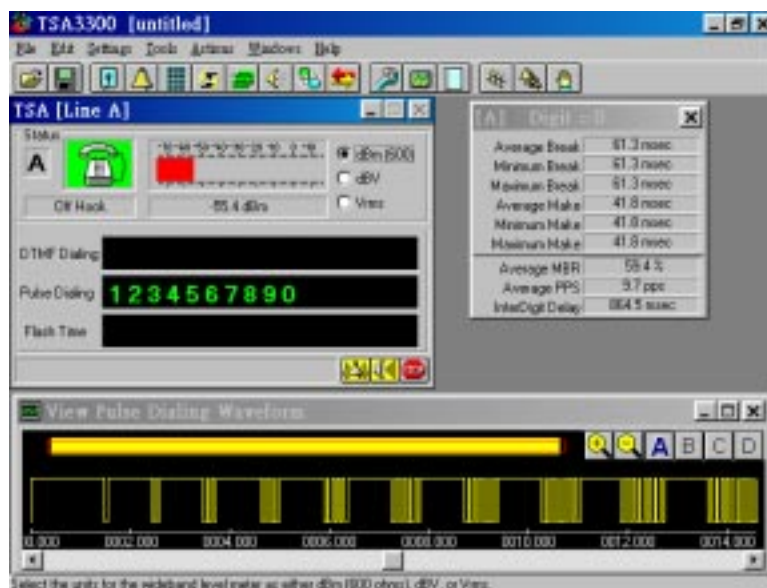
Applications

Telephone testings in all levels of hardware and software development, production assembly, and quality control / assurance.

Models

AI-330: Telephone Signal Analyzer and Simulator - TSPC-TG, TSA-3300

Combined versions with other products (i.e. AI-150, AI-240, or AI-150/240) are available upon request.





SPECIFICATIONS

Tone Generator

Output Level	-70 dBm to +6 dBm +/- 0.3 dB
Frequency Range	50 Hz to 10 kHz
Flatness	+/- 0.3 dB
THD+N	0.09% C-message
Harmonic Distortion	> 65 dBc
Frequency Accuracy	0.015%

Ring Generator

Output Level	0 Vrms to 80 Vrms.
Frequency Range	10 Hz to 600 Hz
Flatness	+/- 0.2 dB
THD+N	0.1%
Frequency Accuracy	0.015%
Ringer Load	5 REN

FSK CALLER ID Generator

Output Level	-60 dBm to 0 dBm +/- 0.3 dB
Modem Frequency	Bell 202 / V.23
Flatness	+/- 0.1 dB

Level Meter

Level Accuracy	+/- 0.2 dB
Frequency Range	10 Hz to 10 kHz
Flatness 100 Hz to 5 kHz	+/- 0.2 dB
Maximum Input	+14 dBm
Residual Noise	<-70 dBmC (C-message)

Telephone Line

Output Impedance	600, 900 +/- 2%, Complex +/- 3%
Loop Voltage	20 - 52 Volts +/- 1V
Loop Current	20 - 40 mA +/- 10%

Note: Specifications are subject to change without notice.

Related Products

AI 100: Telephone Caller ID Signal Simulator Series

The AI150 simulator has the capability to test both the FSK, Bell 202 or V.23, signalling or the Dual Tone Multiple Frequency, DTMF, based signalling systems. Designed for product development, production testing, production verification, and product demonstrations.

AI-240: CAS Evaluation System

The testing to the Bellcore test plan SR-TSV-002476 is critical to the successful deployment of the CIDCW capable product. The AI-240 brings together all of the equipment required, data logger, equalizer, CAS generator, and P.56 speech level meter, to perform the talk-down and talk-off testing. AI-240 also supports fully automatic testing via script language for programmable test sequences and interface for controlling audio CD player. Both talk-down and talk-off test results can be tabulated either manually or automatically to calculate the performance of a CAS detector.

Sales Offices

North America

Advent Instruments Inc.
Suite 311
7633 St. Albans Road
Richmond, British Columbia
Canada V6Y 3W7
Tel: (604) 278-4591
Fax: (604) 278-4412

Asia

Advent Instruments (Asia) Limited
Room 3E04, HKPC Building,
78 Tat Chee Avenue
Kowloon
Hong Kong
Tel: (852) 8108-1338
Fax: (852) 2900-9338

Internet

Web Site <http://www.adventinst.com>
Email techsupport@adventinst.com
sales@adventinst.com

